

2023

# AUCKLAND EVENT KIT

We can't wait to show you why Miss Lucy's Auckland, is perfect for your next gathering, party or work event!

Get in touch with our team today!

[hi\\_auckland@misslucys.co.nz](mailto:hi_auckland@misslucys.co.nz) | [misslucys.co.nz/miss-lucys-auckland](https://misslucys.co.nz/miss-lucys-auckland) | (09) 242-1401

# CONTENTS

**3** Take a Look Around Miss Lucy's

**4** Grazing Bundles

**5** Drinks

**6** General Information

**7** FAQs  
Contact Us





# TAKE A LOOK AT MISS LUCY'S

We'd love to show you around in person and discuss your event requirements. In the meantime, here's a sneak peak...





# GRAZING BUNDLES

## PIZZAS 12"

Stone oven baked, Napoli style with San Marzano tomato and fior di latte cheese

### Margherita

Tomato Napoli, fresh basil, fresh mozzarella, garlic oil, parmesan

### Chicago

Tomato Napoli, pepperoni, ham, onions, mushrooms, extra mozzarella

### Hot Frenchy

Tomato Napoli, fresh mozzarella, crispy French fries, aioli, parmesan

### Cali-Style

Marinated smokey barbecue chicken, mozzarella, red onions, smokey BBQ sauce, red onion jam, coriander

## Bits & Bites Package

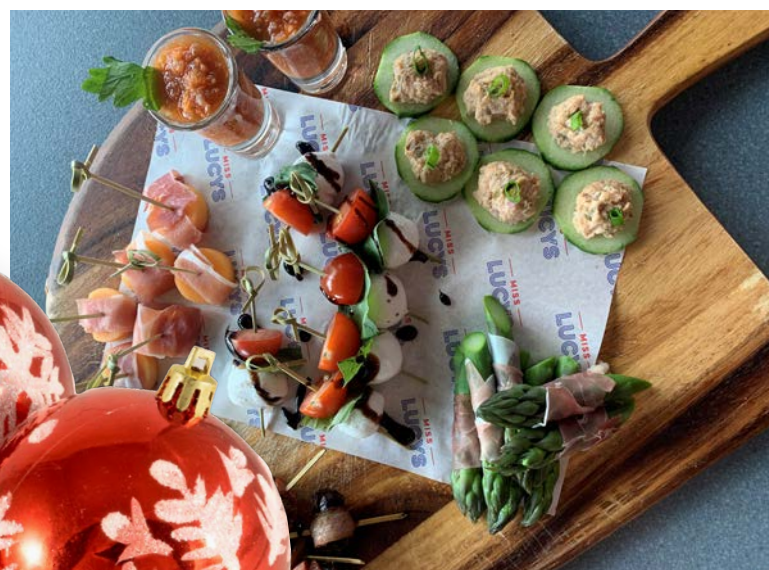
**\$55pp**

Beef, Chicken, Fish,  
Cauliflower mini tacos  
Buffalo Wings  
Kumara Chunks  
Shoestring Fries  
Jalapeno Bites  
Falafel Bites  
Cauliflower Bites  
Meatball Sliders

## Festive Grazing Package

**\$90pp**

Charcuterie & Cheese Boards - 3 x  
Cheeses; 3 x Meats, 3 x Dips, Fresh Breads,  
Crackers, Fruits, Veg, Nuts, Chocolate,  
Olives, Honey  
Prosciutto Wrapped Melon  
Faroush Saled  
Gazpacho Shooter  
Bacon Wrapped Dates  
Salmon Tartare with Cucumber  
Caprese Skewers  
3 Types of Pizza



# DRINKS

You have the option of setting up a bar tab to include only house drinks, a full bar or specific items from our drinks menu.

*If you're interested in cocktails or more specialty drinks, please get in touch with the team.*

## Beer Tap

Miss Lucy's Low Carb  
Tiger  
Heineken  
Tuatara Pilsner  
Tuatara Hazy Pale Ale  
Tuatara Survivor - Fruit Ale

**Tall** **Jug** **Tower 3l**  
10 34  
12 40 65  
13  
12 38  
13 42  
13

## Beer Can / Bottle

Heineken  
Corona  
Amstel 2.5%  
Heineken 0.0%  
Somersby Cider  
Orchard Thieves Passion Fruit Cider

**Can/Bottle**  
10  
10  
9  
9  
10  
12

## Non-Alcoholic Drinks

Soft Drinks  
Lemon, Lime & Bitters  
Juices

4.50  
6  
5.50

## Red Wine

House Wine Montana Festival Block –  
Pinot Noir or Merlot  
Mud House - Pinot Noir (Central Otago)  
Grant Burge Shiraz (Australia)  
Chakana Atorrante - Malbec (Argentina)

**Glass** **Bottle**  
10 35  
13 59  
12 49  
12 49

## White Wine

House Wine Montana Festival Block  
– Sauvignon Blanc, Pinot Gris or  
Chardonnay  
Domaine Paul MAS Estate  
– Chardonnay (France)  
Growers Mark Single - Sauvignon Blanc  
Brookfields Robertson - Pinot Gris

10 35  
12 54  
12 49  
12 49

## Rose

Waipara Hills - Pinot Rose  
La Chasse Rose - Cote Du Rhone  
(France)

10 49  
11 54

## Sparkling

Mionetto Prosecco BRUT NV (Italy)  
Allan Scott Cecilia BRUT - Methode  
Traditionelle (NZ)  
Mumm 'Grand Cordon' Champagne

10 55  
69  
120





# GENERAL INFORMATION

## FOOD

Please chat to our team about our food bundles outlined on page 4. If you have any questions or specific enquiries about a particular dish or how our menus work, drop us a line. If your party is having a drinks only event, any guests are able to order food from the standard menu at normal pricing.

## BEVERAGE

### Cash Bar

Guests purchase beverages as they require from our full beverage menu.

### Bar Tab

A bar tab must be set up prior to the event with our team. Please specify if you would like to set up a bar tab to include only house drinks, a full bar or specific items from our drinks menu, along with the credit limit for the event account. Once the account limit has been reached during the event, you can choose to either increase your account limit for the bar tab, or guests can purchase from the cash bar.

### Subsidised Bar Tabs

You can specify the range of beverages available and a credit limit for the account. As the event organiser, you then set the subsidised per drink cost for your guests to pay, with the remaining beverage cost being deducted from your credit limit.

## FEES

### Deposits & Minimum Spends

Deposits and a minimum food and beverage spend do apply.

Monday & Tuesday - from \$1,800

Wednesday & Thursday - from \$2,400

Friday & Saturday - from \$3,000

Sunday - from \$2,400

The above spends are indicative only. Minimum spends do vary dependent on number of guests, space required and catering requirements. Please contact our team for further information about deposits and minimum spends or for an approximate quote.

### Guest Numbers

Minimum guest numbers and catering requirements are required no less than 10 working days prior to your event date. Final event payment is due on the event date and will be based on minimum guest numbers or actual guest numbers, whichever is greater. There must be a minimum of 10 guests to hold an event.



# FAQS & CONTACT

## Are we allowed a band or DJ?

Yes. This is dependent on date and time, however our team are happy to help organise music and entertainment, just let us know during the enquiry process.

## What time does the bar close?

Our closing time is 11.30pm and venue closes at midnight,, however at the discretion of the manager we could potentially stay until later. Our host responsibility policy will apply.

## Can we decorate the venue?

Yes, please contact our team to discuss venue decorating options.

## Can we bring our own alcohol or food?

Due to the nature of our license, guests are not permitted to bring in their own food or drink.

## Can we organise a subsidised bar tab?

Yes, please refer to page 6.

## Can you cater to dietary requirements?

Yes we can! Please refer to our event menus for more information. If there's a specific dish you'd like made up to fit a dietary requirement, chat to our team and they will see what's possible.

## What ID do you accept?

Only an NZ drivers license, valid passport or HANZ 18+ card (all within a specified expiry date) will be accepted as proof of age. We are legally required to ask anyone who looks under 25 to present ID and failure to do so will result in being unable to enter the venue.

## Is car parking available?

Onsite or off-street parking is not available. There are multiple car parking areas in Central Auckland. The nearest are the City Works Depot or Sky City Auckland Carpark.

## Can we bring children?

Minors are welcome if accompanied by their parents until 10pm.

## CONTACT US

Get in touch with us today to discuss your event or gathering and how Miss Lucy's can make it epic!

54 Cook Street Auckland CBD | (09) 242-1401  
[hi\\_auckland@misslucys.co.nz](mailto:hi_auckland@misslucys.co.nz) | [misslucys.co.nz/auckland](https://misslucys.co.nz/auckland)

 @misslucysak

 facebook.com/misslucysauckland

